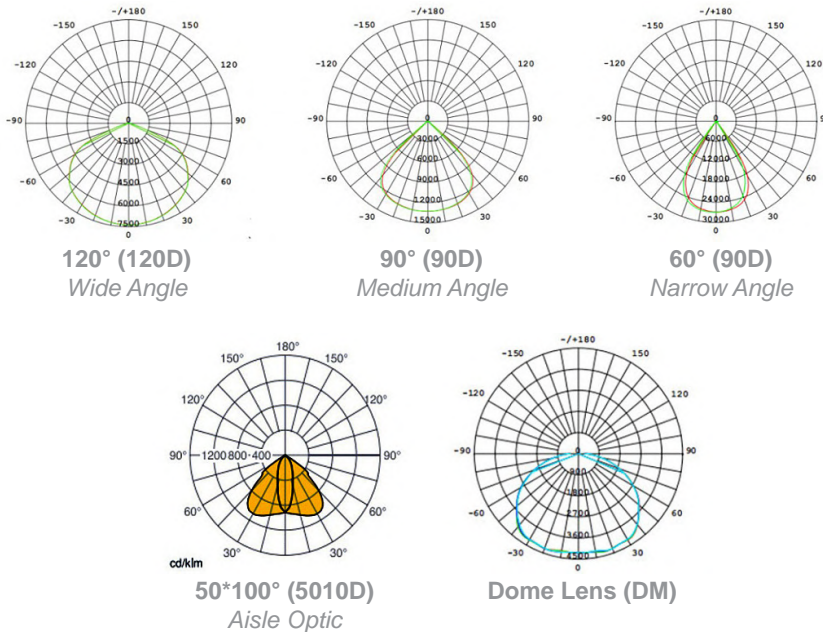




The Bluetooth® word mark and logos are registered trademarks owned by Bluetooth® SIG, Inc.

### LED DISTRIBUTION TYPES



Catalog Number	
Project Name & Location	Type

### Product Specifications

**DIMENSIONS:** 13.75" Diameter x 7.16" Height.  
**DRIVER:** Universal Voltage (120-277V) Electronic Driver. 0-10V Low Voltage Dimming.  
**FINISH:** UV Stabilized powdercoat finish.  
**HOUSING:** Heavy-Duty aluminum construction with no crevices/recesses or exposed screws.  
**LENS:** Polycarbonate.  
**LIGHT ENGINE:** Energy Efficient Light Emitting Diode.  
**BEAM ANGLE:** 60° / 90° / 120° / 50x100° / Frosted Lens (120°).  
**COLOR RENDERING INDEX:** +73 CRI.

**OPERATIONAL TEMPERATURE (AMBIENT):** -40°C to 45°C / -40°F to 113°F  
**POWER FACTOR:** 0.95+.  
**MOUNTING:** Hook Mount, Aircraft Cable, and Pendant Mount.  
**COMPLIANCE:** Built to comply with U.S. and Canadian safety standards. ETL, cETL, FCC, CE, RoHS Certified. Tested IK10 Impact Testing according to IES 62262.2002. IP65 Rated. Buy American Act Compliant.  
**WARRANTY:** Standard 5 Years, defects and workmanship.

### ORDER EXAMPLE:

HBS3-PEND-CSW-SR-LED100-CT4-120D-UNV-BK-BLDA

#### SERIES

HBS3 High Bay Smart 3 Series

#### MOUNTING

- HOOK Hook Mount
- TRUN Trunnion Mount
- ACM Aircraft Cable Mount
- PEND Pendant Mount - 6" Stem Standard  
 - For Other Stem Lengths, Consult Factory  
**Choose Pendant Canopy Style**  
 CSW-RR = Canopy Swivel for 4" Round J-Box  
 - Rapid Mount with Hinged Door  
 CSW-SR = Canopy Swivel for 4" Square J-Box  
 - Rapid Mount with Hinged Door

#### LED WATTAGE

Note: Delivered Lumen Efficacy ±5%

- LED60 60 Watt LED - 8,330 Delivered Lumens
- LED75 75 Watt LED - 10,586 Delivered Lumens
- LED100 100 Watt LED - 13,790 Delivered Lumens
- LED120 120 Watt LED - 20,825 Delivered Lumens
- LED145 145 Watt LED - 24,650 Delivered Lumens
- LED180 180 Watt LED - 32,000 Delivered Lumens

#### LED COLOR TEMPERATURE (CCT)

- CT3 ±3000K LED Color Temp
- CT4 ±4000K LED Color Temp
- CT5 ±5000K LED Color Temp

#### BEAM ANGLE / LENS

- 60D 60°
- 90D 90°
- 120D 120°
- 5010D 50°\*100°
- FRS Frosted Lens (120°)

#### VOLTAGE

- 347 347 Volt
- 480 480 Volt
- UNV 120-277 Universal Volt Electronic Driver  
 - Features Standard 0-10V Dimming

#### STANDARD FINISHES

BK Black

#### PREMIUM UPCHARGE FINISHES

- SG Silver Gray
- WHT White

#### MISC OPTIONS

UPL Uplight

#### SENSOR OPTIONS

- DS Daylight Sensor  
 - Dims to Preset Illumination Level based on Ambient Light  
 - Light Can be Switched Off Manually
- BLDA Motion Sensor  
 - Mounting Height: ≤ 40ft  
 - 360° Coverage  
 - Dimming Levels: 10% / 25% / 50%  
 - Built-in Photocell for Ambient Light Detection  
 - Requires REMT0009 Option

#### TELLELIGHT WIRELESS CONTROL SYSTEM

Certified Bluetooth® Mesh Components & Topology  
 Standard Fixture Options: (Questions? Consult Factory)

- TSC3 Internal Fixture Controller  
 - McWong Model No.: PSC-WCM-50-BLE-SR  
 - External Antennae Cover  
 - TSC3 Requires Sensor
- TSS14 Internal PIR low Bay Sensor w/External Lens  
 - McWong Model No.: PSC-BLI-FM-DC0-BLE-SR

#### Emergency Battery Options

Note: Battery is stored in a separate driver gear box.

- EL16W 16 Watt LED Emergency Battery

#### ACCESSORY OPTIONS

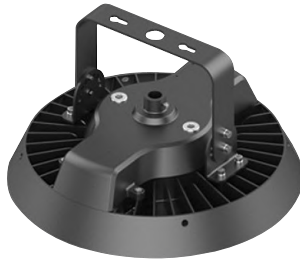
Order As A Separate Line

- REMT0009 Remote Controller for Sensor Options

MOUNTING OPTIONS



Hook Mount  
(HOOK)



Trunnion Mount  
(TRUN)

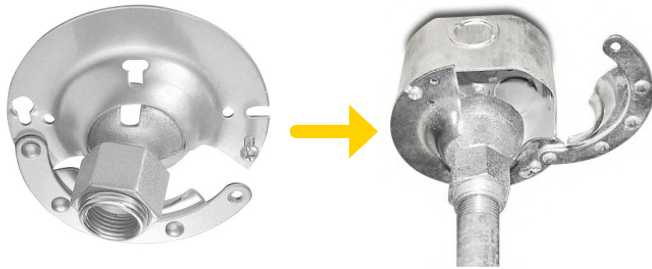


Aircraft Cable Mount  
(ACM)

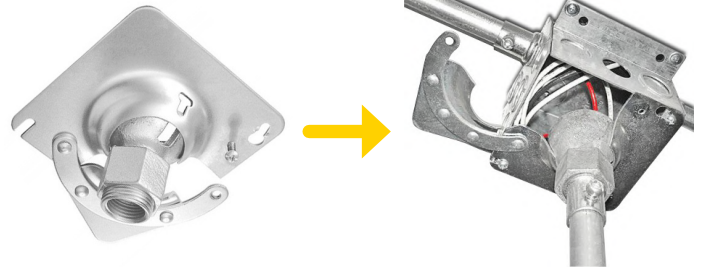


Pendant Mount  
(PEND)

PENDANT SWIVEL CANOPY TYPES



Canopy Swivel 4" for Round/Octagonal J-BOX  
Rapid Mount with Hinged Door  
(CSW-RR)



Canopy Swivel 4" for Square J-BOX  
Rapid Mount with Hinged Door  
(CSW-SR)

PRODUCT OPTIONS



Frosted Lens (FRS)  
Snap-On Installation  
120° Beam Spread Only



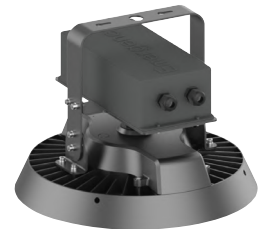
Uplight Option (UPL)



Motion Sensor  
Simple Plug-and-Play  
Installation



REMT0009  
Required for  
Motion Sensor

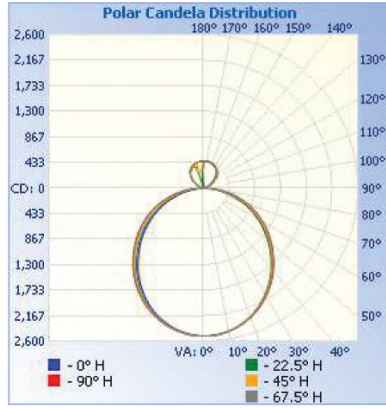


Emergency Battery  
Battery is stored in a separate  
driver gear box.

### PHOTOMETRIC DATA

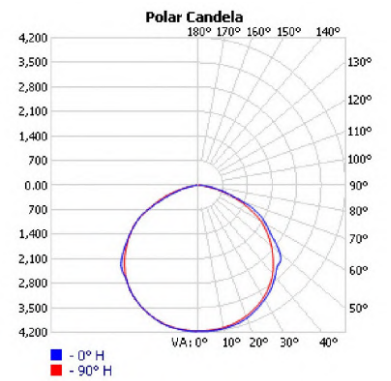
Summary of Results   HBS3-LED60-CT4-120D-UNV-WH-PEND-UPL					
Lumen Output	Efficacy	Input Power	CCT	Distribution	BUG Rating
8,329.5 Lumens	143.3 Lm/W	58.11W	4000K	Type VS	B2-U5-G1

Zonal Lumen Summary	
Zone	Lumens
0-30	1934.8
0-40	3154.3
0-60	5552.4
60-90	1660.2
70-100	771.5
90-120	174.4
0-90	7212.6
90-180	1116.9
0-180	8329.5



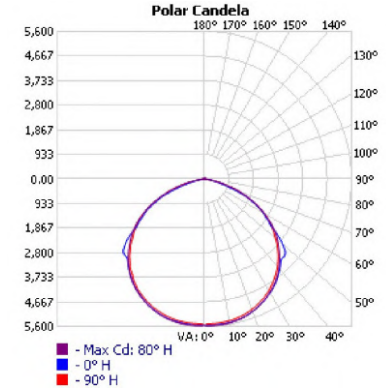
Summary of Results   HBS3-LED75-CT5-120D					
Lumen Output	Efficacy	Input Power	CCT	Distribution	BUG Rating
10,586 Lumens	141.5 Lm/W	74.8W	5000K	Type VS	B3-U2-G1

Zonal Lumen Summary	
Zone	Lumens
0-30	2,885.7
0-40	4,741.4
0-60	8,439.0
60-90	2,150.3
70-100	842.4
90-120	15.7
0-90	10,589.3
90-180	22.3
0-180	10,611.5



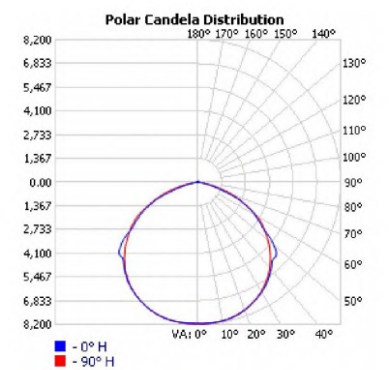
Summary of Results   HBS3-LED100-CT5-120D					
Lumen Output	Efficacy	Input Power	CCT	Distribution	BUG Rating
16,581 Lumens	165.15 Lm/W	100.4W	5000K	Type VS	B3-U3-G1

Zonal Lumen Summary	
Zone	Lumens
0-30	4,458.4
0-40	7,418.9
0-60	13,475.3
60-90	2,985.3
70-100	956.2
90-120	33.5
0-90	16,460.6
90-180	118.8
0-180	16,579.4



Summary of Results   HBS3-LED145-CT5-120D					
Lumen Output	Efficacy	Input Power	CCT	Distribution	BUG Rating
24,382 Lumens	162.8 Lm/W	149.8W	5000K	Type VS	B4-U3-G2

Zonal Lumen Summary	
Zone	Lumens
0-30	6,555.7
0-40	10,909.1
0-60	19,815.2
60-90	4,389.4
70-100	1,406.1
90-120	49.3
0-90	24,204.6
90-180	174.8
0-180	24,379.4



PHOTOMETRIC DATA

Summary of Results   HBS3-LED180-CT5-120D					
Lumen Output	Efficacy	Input Power	CCT	Distribution	BUG Rating
28,880 Lumens	160.0 Lm/W	180.5W	5000K	Type VS	B4-U3-G2

Zonal Lumen Summary	
Zone	Lumens
0-30	6,555.7
0-40	10,909.1
0-60	19,815.2
60-90	4,389.4
70-100	1,406.1
90-120	49.3
0-90	24,204.6
90-180	174.8
0-180	24,379.4

